

# 100m Coaxial Cable LL/LMR195 Type 5mm Low Loss Double Shielded 56MM-E195-100

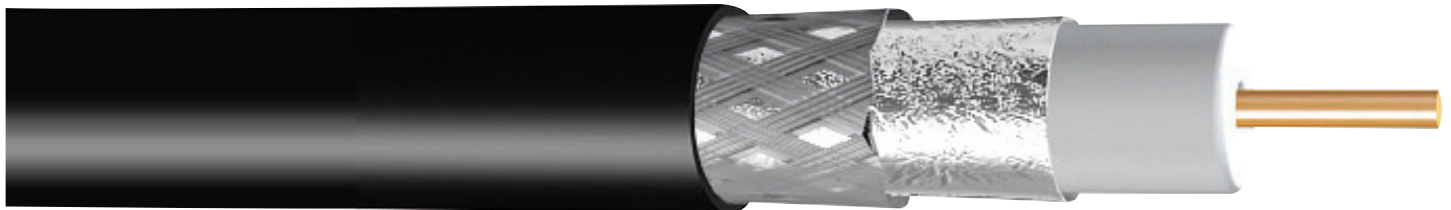


*For the Best*

100m High quality 5mm 50 Ohm LL/LMR195 type low loss coaxial cable for Radio and Cellular systems. It is suited for jumper assemblies in wireless communications systems and short antenna feeder cables. Designed for use predominantly with mobile/cellular antenna systems.

## Features and Benefits

- » LL/LMR195 type coaxial cable is suitable for radio transmission, mobile 3G/4G and 5G cellular systems
- » Impedance: 50 $\Omega$  nom
- » The velocity of propagation - 66%
- » Cut and terminate to the exact lengths required
- » Outside diameter: 4.95mm $\pm$ 0.05
- » Capacitance 98.4pF/M



# 100m Coaxial Cable LL/LMR195 Type 5mm

## Low Loss Double Shielded

### 56MM-E195-100



*For the Best*

#### 56MM-E195-100 Specifications

| Construction                    |                                    |                         |               |                         |       |
|---------------------------------|------------------------------------|-------------------------|---------------|-------------------------|-------|
|                                 | Material                           | Construction            | OD            | Tolerance               | Pitch |
| Centre Conductor                | Anneald Bare copper Wire           | Single strnad           | 0.94          | OD±0.05 Strands ± 0.01  |       |
| Insulation:<br>(Dielectric)     | Polyethylene                       | Gas injected<br>Foam    | 2.79          | ±0.05                   |       |
| Shield 1                        | Polyster/Aluminium                 | Unbonded Foil<br>0.12mm | 3.03          | OD ±0.05 Strands ± 0.01 |       |
| Shield 2                        | Tinned Copper Wire Braid           | 7/16/0.127mm            | 3.49mm        | OD ±0.05 Strands ± 0.01 | 14ppi |
| Jacket (Sheath)                 | Non Contaminating UV<br>Stable PVC | Extruded                | 4.95mm        | OD ±0.05                |       |
| Mechanical Characteristics      |                                    |                         |               |                         |       |
| Net Cable Weight                |                                    |                         | 3.6kg/100m    |                         |       |
| Cable weight (incl spool)       |                                    |                         | 3.9kg/100m    |                         |       |
| Max Recommended pulling tension |                                    |                         | 19kg          |                         |       |
| Minimum Band Radius             |                                    |                         | 20mm          |                         |       |
| Operating Temperture            |                                    |                         | -40° to +80°C |                         |       |
| Electrical Characteristics      |                                    |                         |               |                         |       |
|                                 |                                    | Attenuation             |               |                         |       |
| Capacitance                     | 98.4pF/M                           | Frequency (MHz)         | dB/100m       | Max Power Watts         |       |
| Impedance                       | 50ΩNom                             |                         |               |                         |       |
| Velocity of<br>propagation      | 66%                                | 30                      | 8.4           | 600                     |       |
| Conductor DCR                   | 3.29 Ohms/km                       | 100                     | 11.8          | 400                     |       |
| Shield DCR                      | 1.25 Ohms/km                       | 200                     | 16.8          | 300                     |       |
| Nom. Inductance                 | 0.059 uH/ft (0.194 uH/m)           | 400                     | 24.0          | 215                     |       |
| Peak Power                      | 16kW                               | 500                     | 32.0          | 160                     |       |
| Nominal Delay                   | 5.05ns/mtr                         | 800                     | 36.5          | 140                     |       |
| Mazimum                         |                                    | 1000                    | 38.5          | 133                     |       |
| Operating Voltage               |                                    |                         |               |                         |       |