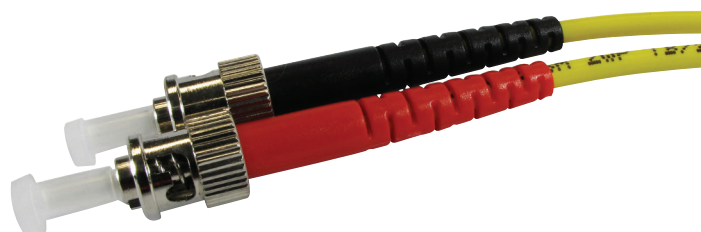
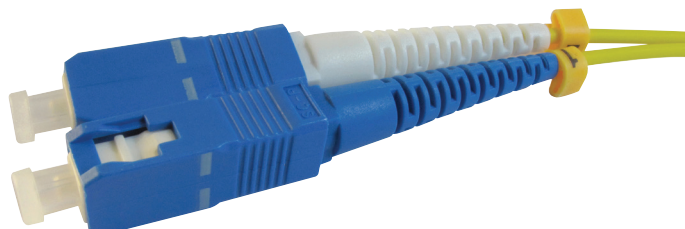


The SC to ST duplex 9/125µm OS2 single-mode fibre optic patch cable is ideal for connecting 1G/10G/40G/100G Ethernet connections. It can also save space for your high-density cabling in data centres, enterprise networks, telecom rooms, server farms, cloud storage networks, and any place fibre patch cables are required.

## Features and Benefits

- » Applications include Data Network, Telecommunications, Optical switch networks, industrial and medical
- » 3mm buffer offers industry standard protection
- » Lifetime replacement warranty
- » Low insertion loss less than 0.2dB
- » Return loss for APC >65dB
- » Test reports provided with each patch cord



| Product Code     | Connection | Type     | Length |
|------------------|------------|----------|--------|
| 20MM-PS2DSCST-1  | Duplex     | SC to ST | 1m     |
| 20MM-PS2DSCST-2  | Duplex     | SC to ST | 2m     |
| 20MM-PS2DSCST-3  | Duplex     | SC to ST | 3m     |
| 20MM-PS2DSCST-5  | Duplex     | SC to ST | 5m     |
| 20MM-PS2DSCST-10 | Duplex     | SC to ST | 10m    |
| 20MM-PS2DSCST-15 | Duplex     | SC to ST | 15m    |
| 20MM-PS2DSCST-20 | Duplex     | SC to ST | 20m    |