

TV Bracket Range



TV Tilt and Swivel Wall Mount 23-42"

O4MM-TB01

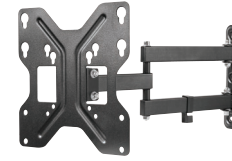
- » Heavy Duty LCD wall bracket
- » Swivelling 85° and 360° rotating mounting plate to allow viewing in portrait or landscape
- » Easy 3 step installation with built in bubble level and Anti-theft design
- » Slide in VESA plate for easy install and detachment, VESA max 200 x 200mm
- » 20kg load rating and tilt -15° ~ + 15°



TV Tilt and Swivel Dual Arm Wall Mount 23-42"

O4MM-TB02

- » Heavy Duty dual arm LCD wall bracket
- » Tilt -15° ~ + 15° and swivel 180°
- » 30kg load rating
- » Suitable for corner mounting
- » Keyhole pattern allows for easy installation
- » VESA max 200 x 200mm



TV Rail Mount Bracket 32-55"

O4MM-TB03

- » Suits TV's 32-55"
- » Built in bubble level
- » Ultra slim design (19mm)
- » 45kg load rating
- » VESA max 400 x 200mm
- » Simple to use rail mount bracket for flush mounting TV's



TV Rail Mount Bracket 37-70"

O4MM-TB04

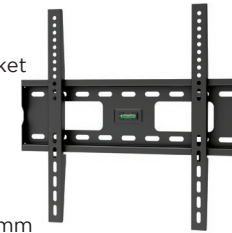
- » Simple to use rail mount bracket for flush mounting TV's
- » Ultra slim design (19mm)
- » Built in bubble level
- » 65kg load rating
- » VESA max 800 x 400mm



TV Flush Mount Bracket 32-55" Full Wall Plate

O4MM-TB05

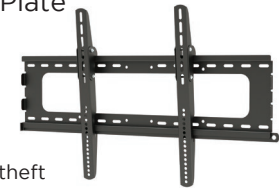
- » Flush mount wall bracket 32-55" with full wall mounting back plate
- » 75kg load rating
- » Built in bubble level for easier installation
- » VESA max 400 x 400mm



TV Flush and Tilt Mount Bracket 37-70" Full Wall Plate

O4MM-TB06

- » Flush mount wall bracket with full wall mounting back plate
- » 75kg load rating
- » Locking bar for anti-theft
- » Can be tilted -5° by using supplied mounting arm accessories
- » VESA max 600 x 400mm



TV Tilt Mount Bracket 37-70" Full Wall Plate

O4MM-TB07

- » Tilt mount wall bracket 37-70" with full wall mounting back plate
- » Tilt adjustable -10 to +10°
- » Heavy duty 75kg load rating
- » Built in bubble level for easy installation
- » VESA max 800 x 400mm



TV Tilt and Swivel Bracket 37-70" Heavy Duty

O4MM-TB08

- » Heavy duty 60kg load rating
- » VESA max 600 x 400mm
- » Built in level adjustment + or -3°
- » Dual support arms for maximum stability
- » 645mm back plate for mounting across two studs
- » Tilt -15° ~ + 2° and swivel -60° ~ + 60°



Projector Ceiling Mount

O4MM-TB09

- » Heavy duty universal projector mount
- » 360° rotation and 15° tilt for maximum viewing ability
- » 10kg load rating
- » Cable management system built in
- » 130-320mm mounting adjustment



Ceiling Mount Pole

O4MM-TB10

- » Heavy duty ceiling mount extension bracket for use with O4MM-TB06 and O4MM-TB07
- » 360° rotation adjustment
- » Height adjustable range from 1050mm to 1620mm
- » 75kg load rating



TOLL FREE 0800 237 425
WWW.MATCHMASTER.CO.NZ

