

Low Profile TV Flush and Tilt Mount Bracket 37-70"

Full Wall Plate

O4MM-TB06LP

- » 20.5mm super low profile
- » Flush mount wall bracket 37-70 inch with full wall mounting back plate
- » Can be tilted -8 degrees by using supplied mounting arm accessories
- » 35kg load rating
- » Compatible with all hole patterns including VESA standard



TV Tilt Mount Bracket 37-90"*

Full Wall Plate

O4MM-TB07

- » Tilt mount wall bracket 37-90 inch* with full wall mounting back plate
- » Tilt adjustable -10 to +10° with easy grip knobs for quick adjustment and locking
- » Heavy duty 75kg load rating
- » Compatible with all hole patterns including VESA standard
- » Built in bubble level for easy installation



TV Tilt and Swivel Bracket 37-70"

Heavy Duty

O4MM-TB08

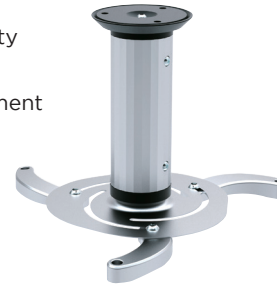
- » Heavy duty tilt and swivel extension bracket for large TV's 37-70"
- » Heavy duty 60kg load rating
- » Compatible with all hole patterns including VESA standard
- » Dual support arms for maximum stability
- » 645mm back plate for mounting across two studs
- » Built in level adjustment + or -3°



Projector Ceiling Mount

O4MM-TB09

- » Heavy duty universal projector mount
- » 360° rotation and 15° tilt for maximum viewing ability
- » 10kg load rating
- » 130-320mm mounting adjustment
- » Cable management system built in



Ceiling Mount Pole

O4MM-TB10

- » Heavy duty ceiling mount extension bracket for use with O4MM-TB05, O4MM-TB06 and O4MM-TB07
- » 360° rotation adjustment for optimal viewing
- » Height adjustable range from 1050mm to 1620mm
- » 75kg load rating



* Size must be within the range of limit for weight and VESA pattern



TOLL FREE 1800 237 425
WWW.MATCHMASTER.COM.AU



For the Best

TV Bracket Range



TV Tilt and Swivel Wall Mount 23-42"

O4MM-TB01

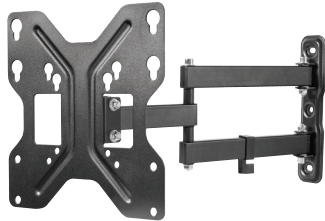
- » Heavy Duty LCD wall bracket suitable for 23-42" TV's
- » Swivelling and 360° rotating mounting plate to allow for maximum flexibility and for viewing in portrait or landscape
- » Easy 3 step installation with built in bubble level
- » Slide in VESA plate for easy installation and detachment
- » 20kg load rating
- » Anti-theft design



TV Tilt and Swivel Dual Arm Wall Mount 23-42"

O4MM-TB02

- » Heavy Duty dual arm LCD wall bracket suitable for 23-42" TV's
- » Tilt and swivel adjustable for maximum viewing flexibility
- » Keyhole pattern allows for easy installation
- » Suitable for corner mounting
- » 30kg load rating



TV Rail Mount Bracket 32-55"

O4MM-TB03

- » Simple to use rail mount bracket for flush mounting TV's
- » Ultra slim design (19mm)
- » Suits TV's 32-55"
- » Built in bubble level
- » 45kg load rating



TV Rail Mount Bracket 37-70"

O4MM-TB04

- » Simple to use rail mount bracket for flush mounting TV's
- » Ultra slim design (19mm)
- » Suits TV's 37-70"
- » Built in bubble level
- » 65kg load rating



TV Flush Mount Bracket 32-55"

Full Wall Plate

O4MM-TB05

- » Flush mount wall bracket 32-55" with full wall mounting back plate
- » Compatible with all hole patterns including VESA standard
- » 75kg load rating
- » Built in bubble level for easier installation



TV Flush and Tilt Mount Bracket 37-90"* Full Wall Plate

O4MM-TB06

- » Flush mount wall bracket 37-90 inch* with full wall mounting back plate
- » 75kg load rating
- » Locking bar for anti-theft
- » Can be tilted -5° by using supplied mounting arm accessories
- » Compatible with all hole patterns including VESA standard

