

Wi-Fi NVR Kit INSTRUCTION MANUAL

Please read the Quick Start Guide carefully before using the product and keep it. Related tools and documents of products, please download from www.matchmaster.com.au/security-resources.

DECLARATION

Thank you for purchasing our products, if you have any questions or requirements, please contact us. This manual is for Wi-Fi NVR Kits (wireless NVR & wireless cameras). It will be updated subject to product's updating.

SAFETY PRECAUTIONS

1. Please modify default password promptly after the equipment is installed, to avoid unauthorised access.
2. Please do not place and install the equipment in direct sunlight or near heating equipment.
3. Please do not install the equipment in wet or dusty environments.
4. Please install the NVR in a level setting or install it in a stable place, and take care to prevent the product from falling.
5. Do not drop or splash liquid onto the NVR and ensure that no liquid-filled items are placed on the device to prevent damage.
6. Please install the equipment in a well ventilated place and do not block the air vents of the equipment.
7. Please use the equipment within rated input/output range only.
8. Please do not disassemble the equipment without notifying supplier.
9. Please transport, use and reserve the equipment in permissible range of humidity and temperature.

DISCLAIMER

Please pay special attention to the following exclusions or restrictions:

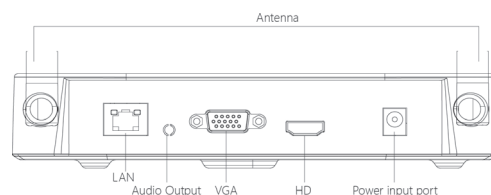
1. If the product is terminated for any of the following reasons, our company shall not be liable for any personal injury or property damage to you or third parties:
 - A. The installation or use of equipment

is not strictly in accordance with the requirements; B. Maintenance of state or public interests; C. Majeure; D. Your own or third-party reasons, including but not limited to the use of third-party products, software, components and so on.

2. Our company does not guarantee the equipment for special purposes or use in any express or implied way. This equipment shall not be used for medical/safety equipment or other products which can cause personal injury or death Any loss or liability arising from such use shall be borne by user.
3. This equipment can perceive specific illegal invasion in correct installation and use, but it can not avoid accidents or personal injury and property loss caused by this. In daily life, please be vigilant and strengthen the awareness of safety precautions.
4. We are not liable for any consequential, accidental, special or punitive damages, requests, property losses, data losses and documents losses. In the maximum extent permitted by law, our liability for compensation shall not exceed the amount paid by you when purchasing this product.

PRODUCTS APPEARANCE DESCRIPTION

LAN, Audio Output, VGA, HDMI, Power input port, Antenna.



Note: Images for instruction use only, the final goods may differ in appearance.

WI-FI NVR KITS QUICK INSTALLATION GUIDE

This Wi-Fi NVR kit has no need for cabling between the cameras and the NVR. (cameras do require a local power point) Easy installation with plug and play, the supplied cameras in this kit are already paired to the NVR. The wireless communication uses automatic password generation to ensure that the monitored video will not be visible outside this network.

1. Install HDD. (Kits already have an HDD preinstalled)

Make sure all power is cut before installing. Installation tool: Phillips screwdriver.

Notes: If your NVR is supplied without a hard disk, please use the professional hard disk recommended by supplier

1. Unscrew the screws on the back and sides of the chassis and remove the cover.



2. Connect one end of the hard disk power cable and data cable to the motherboard and the other end to the hard disk.



3. Align the hard disk screw holes to the chassis backplane, and then tighten to lock the screws.



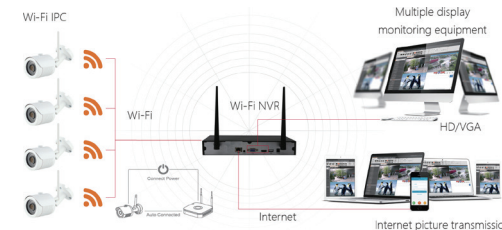
4. Install the cover and reinstall chassis screws.



2. Make sure Wi-Fi NVR Kits is working well.

Connect NVR to monitor, make sure all devices are powered on. Cameras should auto pair. When all the IPC cameras appear on the display, the device is ready.

Note: Please make sure the NVR video output and monitor input have been connected. Please use the matched power supply in the package to prevent the NVR from not functioning properly or damaging the NVR.

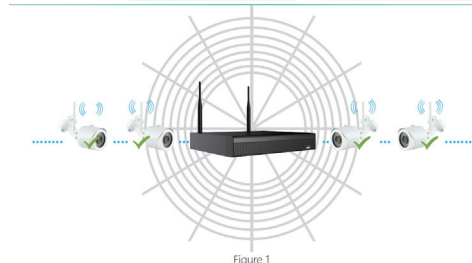


Note: Images for instruction use only, the final goods may differ in appearance.

3. Adjusting the Antenna

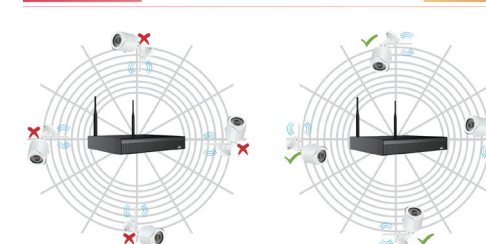
The NVR antenna transmits signals to the surroundings. When the NVR and the IPC antenna are at the same height and parallel to each other, the effect is best. If the NVR is not the same height, the IPC antenna should be tangent to the sphere with the center of the NVR (Figure 1, Figure 2- 2). Don't let the antenna point directly at NVR (Figure 2-1), Figure 2-2 shows how the antennas can be placed correctly.

Ideal Installation Mode Correct demonstration



Not Suggested

Suggested

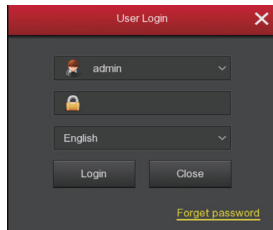


Note: Images for instruction use only, the final goods may differ in appearance.

SYSTEM LOGIN

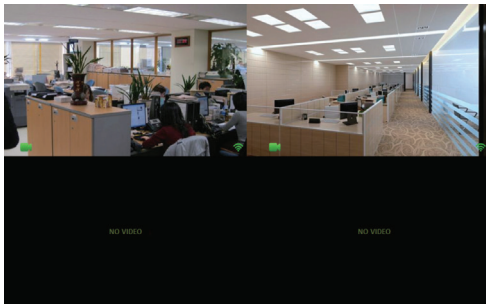
Start up the NVR, right click the desktop and enter the user login interface. Input the username and password.

Default Username: admin
Default Password: 12345



LIVE VIEW

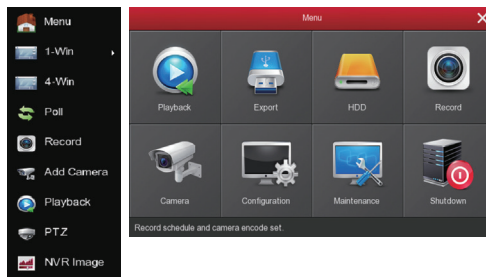
After the device is started, you can enter the preview screen. The system date, time, and channel name can be seen on the preview screen. After logging in to the system, double-click the left mouse button to preview the single screen; double-click the left mouse button again to return to the multi-screen preview.



MENU OPERATION INSTRUCTION

Right click to popup shortcut menu, the menu consists of the following three parts:

1. Preview mode: Select the preview mode in the menu bar you like, such as [1-Win] or [4-Win].
2. Shortcut menu mode: It contains [Poll], [Record], [Add Camera], [Playback], [PTZ] and [NVR Image], you can click and enter corresponding menu directly. After the setting is completed and the application is saved, click the right mouse button on the setting interface to exit the interface or return to the previous menu.
3. Main menu: It contains [Playback], [Export], [HDD], [Record], [Camera], [Configuration], [Maintenance], [Shutdown] eight parts.



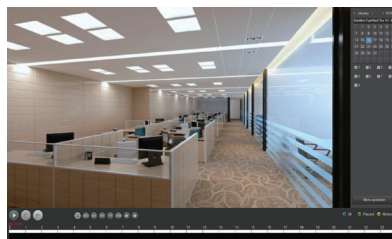
RECORDING SETTING

1. Enter "Record" interface to set recording from shortcut menu [Record] or main menu. Default setting is all channels are recorded 24 hours a day.
2. Check [Motion Detection] to open the motion detection video.
3. The motion sections have no more than 6 time periods each day, and the device can perform normal recording or motion detection recording during the planned time period. If normal record and motion record are overlapped, it can only save the motion records while motion detection comes up.



PLAYBACK

1. Enter "Playback" interface by clicking "Playback" from shortcut or main menu.
2. Select channels, record mode, date and search the record files, click the play button in the lower left corner of the interface to play the video file, or drag the time progress bar to play the video file at the specified time.



(Video playback interface)

PC SIDE LAN ACCESS

1. PC and NVR are connected in the same LAN (connected to the same router).
2. Open the search tool on the PC, select the target device from the search results and double-click with the left mouse button to enter the login interface (search tool can be downloaded and installed at www.matchmaster.com.au/security-resources)



Double click the left mouse button

3. Enter the username and password and click Login (the default username is admin and the password is 12345).

MOBILE APP ACCESS

Download and install MM Vision on smart phone by following way:

1. In the Android phone App Store or iPhone App Store enter "MM Vision" search.
2. Scan the following QR codes.

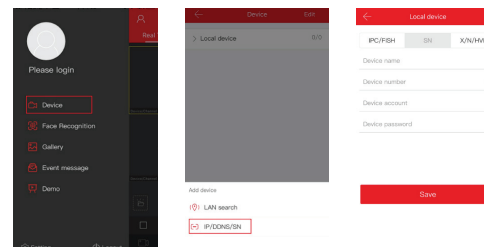


Android



iOS

Run the MM Vision App (new users need to register an account to log in first). The steps to add devices are as follows:



1

2

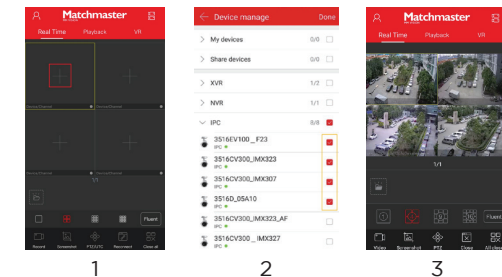
3

1. Click on [Device] in the top left corner and click on [Device] in the sliding menu.
2. Click [Add device] > [SN Add], Align the QR code on the bottom of the NVR to scan;
3. Enter device user name, password and Captcha (printed on the label), click [Submit];

4

4. Click [Device name] > enter the device name, click [Done]; Click [Group] > choose camera group, click [Done], click [Finish].

The steps to preview the video are as follows:



1

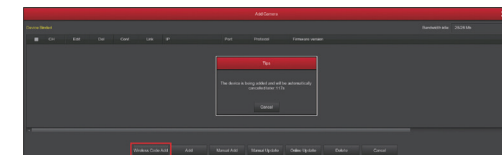
2

3

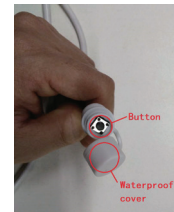
1. Click [Real time], click [Device] to enter the Device manage interface.
2. Select the channel to preview, click [Done].
3. Start to play the real-time video.

WIRELESS PAIRING

The Wi-Fi NVR Kits has been paired with the code at the factory, and can be mapped when powered. If there is a special situation, you need to re-pair the code. You can right click on the NVR and click [Add Camera] in the shortcut menu to enter the Add Camera interface. Click [Wireless Code Add], within 120 seconds of the NVR pair code countdown, long press the button on the camera tail line (about 6 seconds) until the camera infrared light flashes. At this time, the code pairing will be performed and the camera will automatically display.



Note: The button on the camera tail has a cover, and the cover is water/dust resistant. Make sure to replace the cover when not using the button.



RESET

The camera supports forced recovery of the factory settings by quickly pressing the button on the tail line 3 times, including network setting parameters and wireless pairing parameters, etc., please be careful.